

## Monet's River Thames Series



### Palace of Westminster

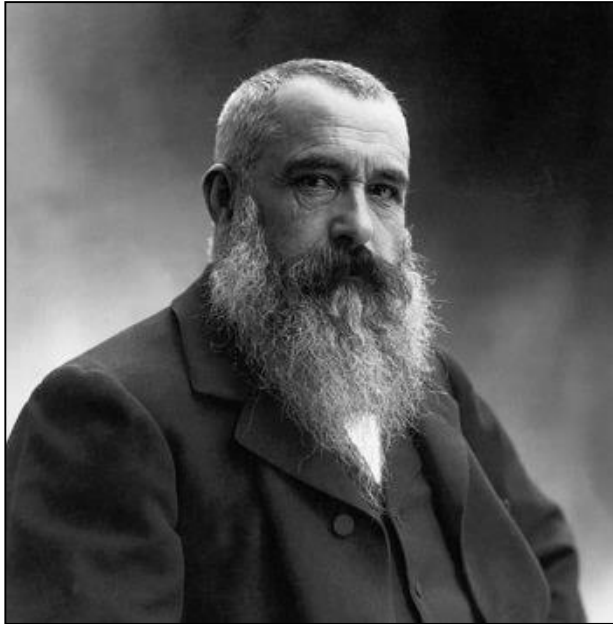






**Waterloo Bridge**





# Claude Monet

French Artist

Born in Paris in 1840

Died 1926

He loved to paint outdoors and particularly enjoyed using light and colour to create an “Impression.”

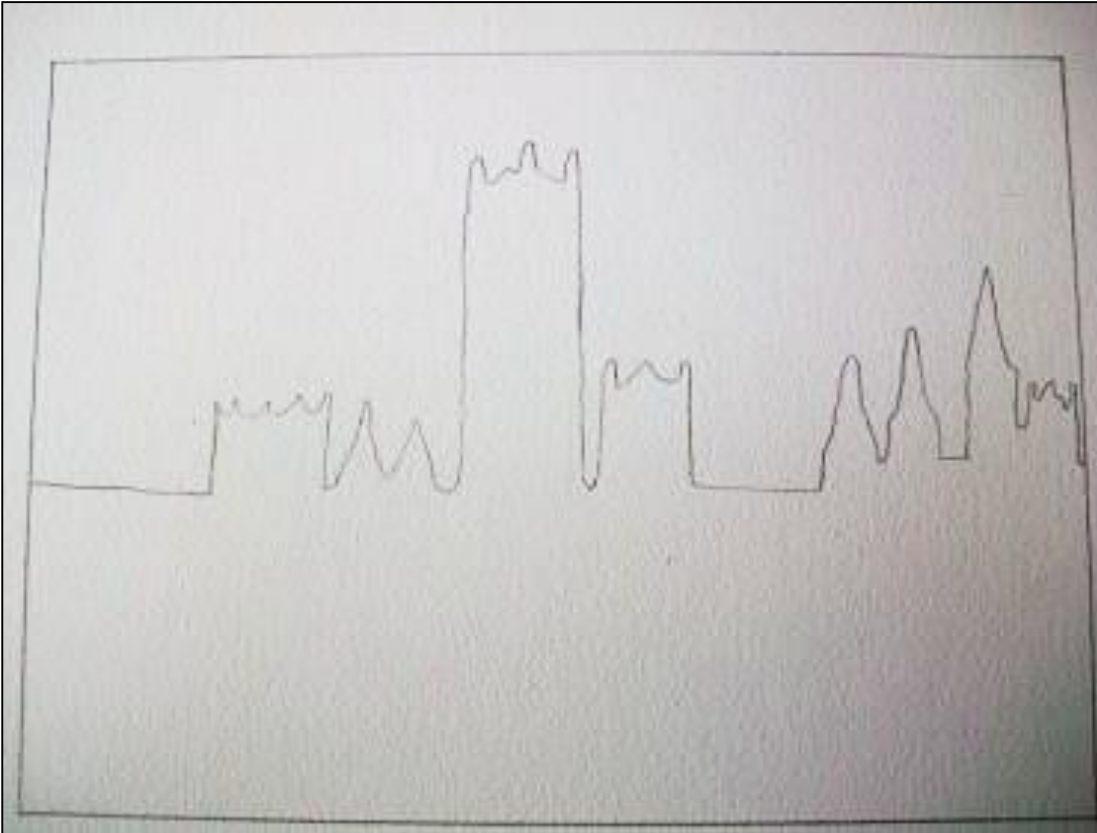
He is famous for starting a new style of art called “Impressionism.”







1. Draw a rectangle with a ruler that leaves a small border around the edge of your paper



2. Using your Monet painting as a guide, draw the outline of Westminster Palace and the rest of the horizon across the centre.

*Do not worry if it is not exact or you do not have the right number of towers and turrets. Remember you are just creating an impression.*



Can you use your picture of Westminster Palace and create your own impressionism image, using any form of art materials you have.

You can use: pencils      chalks      pens      paints